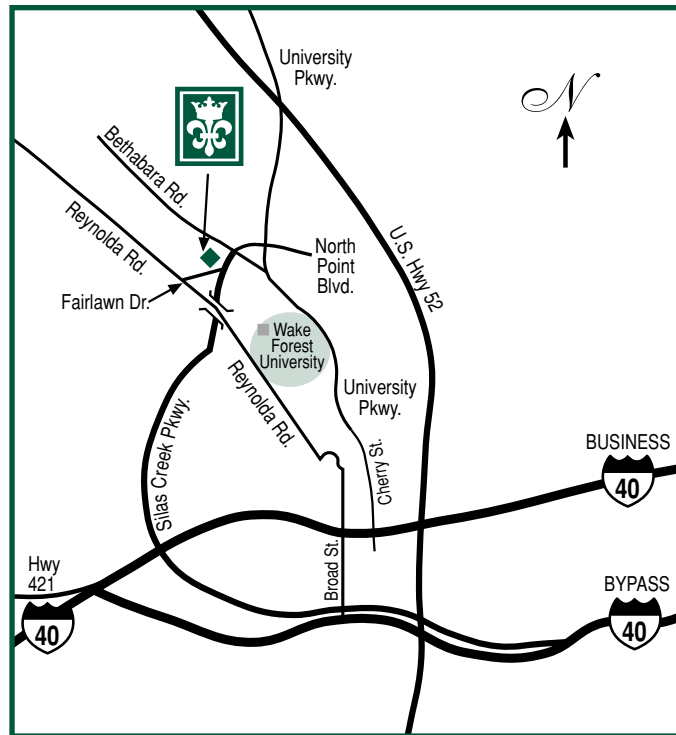




Premier Location



WE'RE CONVENIENTLY LOCATED AT THE INTERSECTION OF SILAS CREEK PARKWAY AND FAIRLAWN DRIVE, SURROUNDED BY A FOUR ACRE NATURAL FOREST PRESERVE.

- ❁ Desirable northwest Winston-Salem
- ❁ Scenic and historic Sunnynoll
- ❁ Upscale residential neighborhood
- ❁ One mile from Wake Forest University
- ❁ Three miles from Hanes Mall
- ❁ Near Forsyth Memorial Hospital and Wake Forest Medical Center

Directions: From Business 40 W, take Silas Creek Parkway North to Fairlawn Drive, turn left on Fairlawn and Crowne Park is on the right.

CROWNE PARK

(336) 761-1666

900 CROWNE PARK DRIVE ❁ WINSTON-SALEM, NC 27106

TOLL FREE: (888) 595-9965 ❁ FAX (336) 761-0480 ❁ E-MAIL: park@crowneapartments.com



Welcome to another signature community by Crowne, the only name for luxury apartment living in today's sophisticated Triad area. Established in a preserve, adjacent to the old growth forest that is Sunnynoll, Crowne Park is well situated at the prime intersection of Silas Creek Parkway and Fairlawn Drive, just one mile west of Wake Forest University.

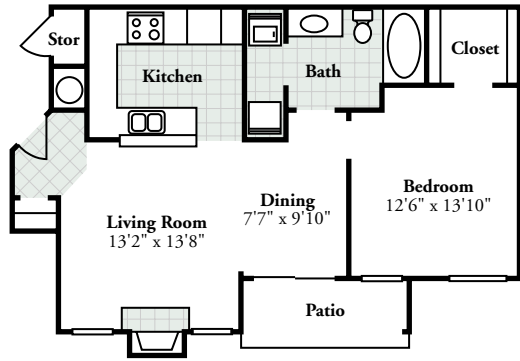
Premier Community

WE OFFER THE VERY FINEST COMMUNITY AMENITIES:

- ❁ Classic residential clubhouse
- ❁ State-of-the-art fitness center
- ❁ Resort-style swimming pool
- ❁ Scenic walking trails
- ❁ Lush natural landscaping
- ❁ Controlled access entry gate
- ❁ Enclosed garages or storage available
- ❁ Executive business center

OUR ELEGANT INTERIORS ARE CUSTOM DESIGNED WITH PRIDE:

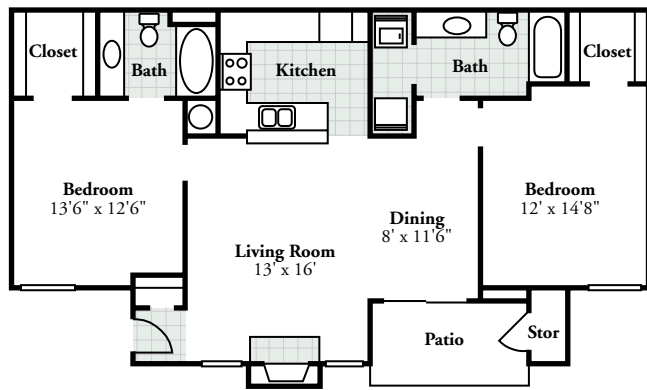
- ❁ Six spacious floorplans
- ❁ Soaring vaulted or nine ft. ceilings
- ❁ Expansive windows for natural light
- ❁ Crown molding and ceiling fans
- ❁ Wood-burning fireplaces with mantles
- ❁ Track lighting and mini blinds
- ❁ Spa-style luxury garden tubs
- ❁ Top of the line kitchen appliances
- ❁ Large frost-free refrigerators/icemakers
- ❁ Solid European kitchen cabinets
- ❁ Designer coordinated interior accents
- ❁ Outdoor patios or balconies with storage
- ❁ Pre-wired for advanced communications



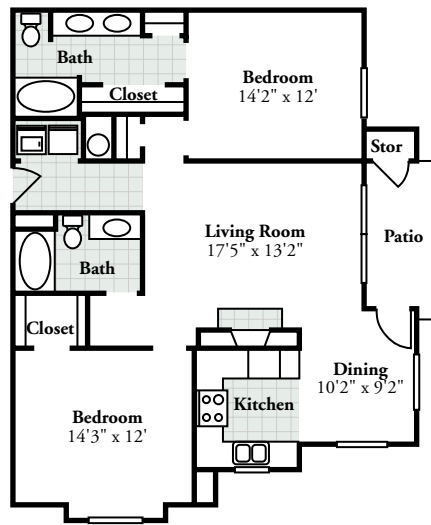
One Bedroom Deluxe
(863 sq.ft.) \$ _____



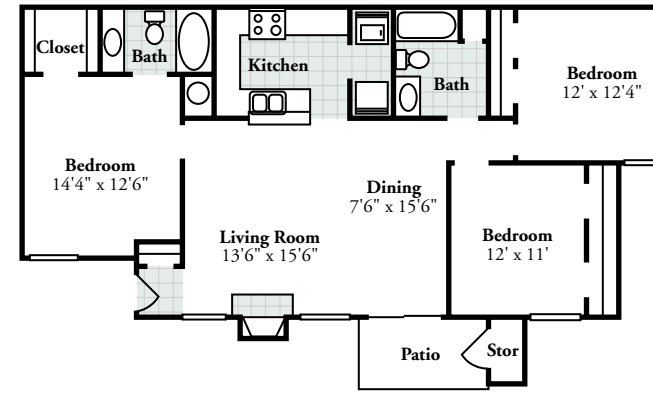
One Bedroom Diplomat
(899 sq.ft.) \$ _____



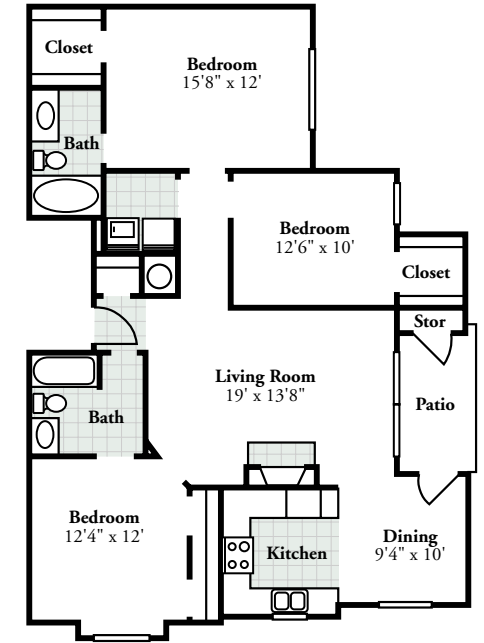
Two Bedroom Executive
(1195 sq.ft.) \$ _____



Two Bedroom Phoenix
(1249 sq.ft.) \$ _____



Three Bedroom Regency
(1325 sq.ft.) \$ _____



Three Bedroom Ambassador
(1371 sq.ft.) \$ _____

Security Deposit \$ _____
Application Fee \$ _____

Premier Floorplans

We take pride in offering six spacious floorplans. Our elegant homes include the maximum amount of living space, bedrooms to fit king or queen beds, plenty of cabinet and closet areas, and large windows for natural lighting.