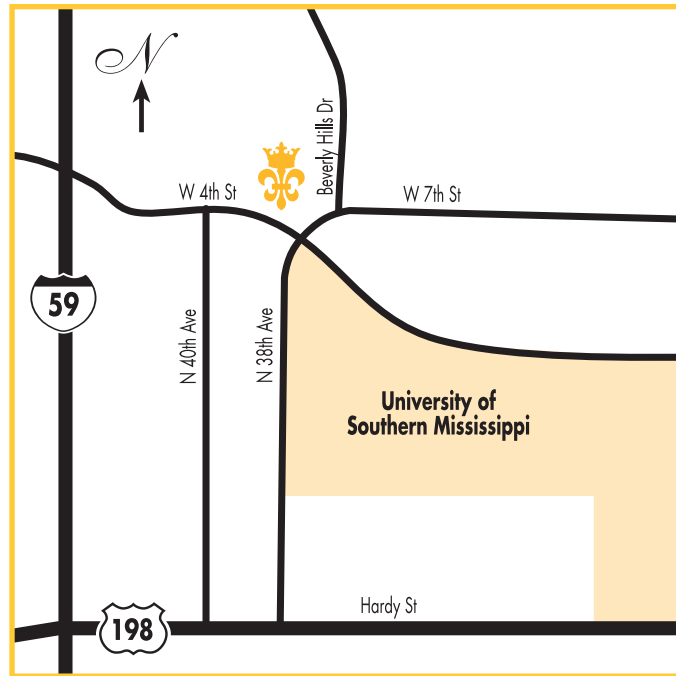




Premier Location



WE'RE CONVENIENTLY LOCATED ...

- ✿ Directly NW of the University of Southern Mississippi
- ✿ On scenic Long Leaf Trace
- ✿ Close to fine dining and entertainment

Directions: From I-59 take exit 65. Go east on Hardy Street to the second traffic light and turn left on N. 38th Avenue (which turns into W. 7th Street). Turn left on Beverly Hills Drive and we are on the left.



(601) 579-4779 ✿ TOLL FREE (888) 933-8881

700 BEVERLY HILLS ROAD ✿ HATTIESBURG, MS 39401

E-MAIL: crownellr@bellsouth.net ✿ www.crowneapartments.com



Introducing Crowne at Long Leaf Trace, the only name for elegant apartment living in Hattiesburg. We are conveniently located at the intersection of Beverly Hills Drive, West 4th Street and West 7th Street on the scenic rolling trail of Long Leaf Trace.

Our luxury community will provide you with top of the line interior details, first class amenities and immaculate landscaping.

Premier Community

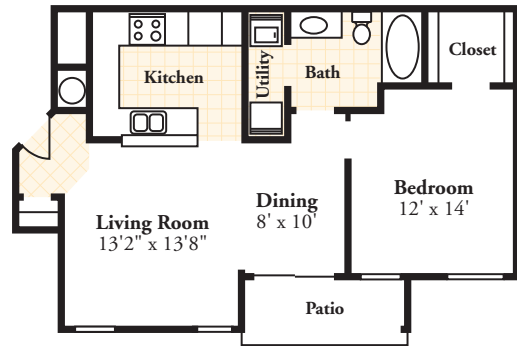
WE OFFER THE VERY FINEST COMMUNITY AMENITIES:

- ✿ Elegant Clubhouse
- ✿ Fully equipped game room
- ✿ Coffee lounge
- ✿ Grill area
- ✿ Computer/study/conference center
- ✿ State of the art fitness center
- ✿ Luxury swimming pool and deck
- ✿ Easy access to Long Leaf Trace

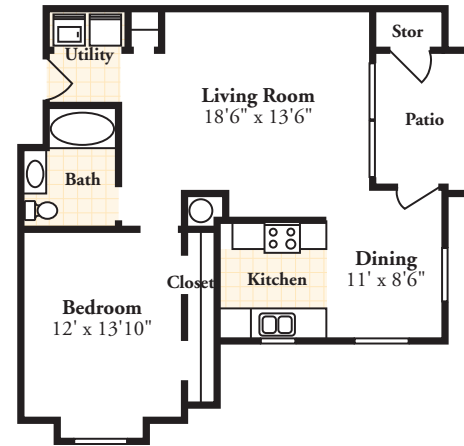
OUR ELEGANT INTERIORS ARE CUSTOM DESIGNED WITH PRIDE:

- ✿ Spacious 1, 2 & 3 bedroom floorplans
- ✿ Full baths for every bedroom
- ✿ 9 ft or vaulted ceilings
- ✿ Track lighting, ceiling fans & mini blinds
- ✿ Double crown molding
- ✿ Luxury garden tubs*
- ✿ Large walk in closets
- ✿ Washer & dryer in every unit
- ✿ Well equipped kitchens
- ✿ Built in microwaves

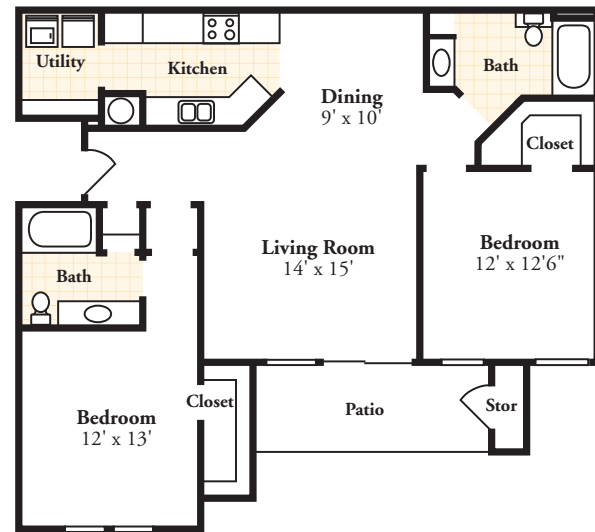
*Available in select homes



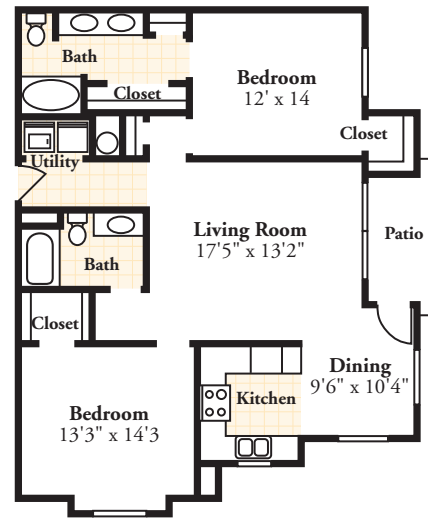
One Bedroom Deluxe
(845 sq.ft.) \$ _____



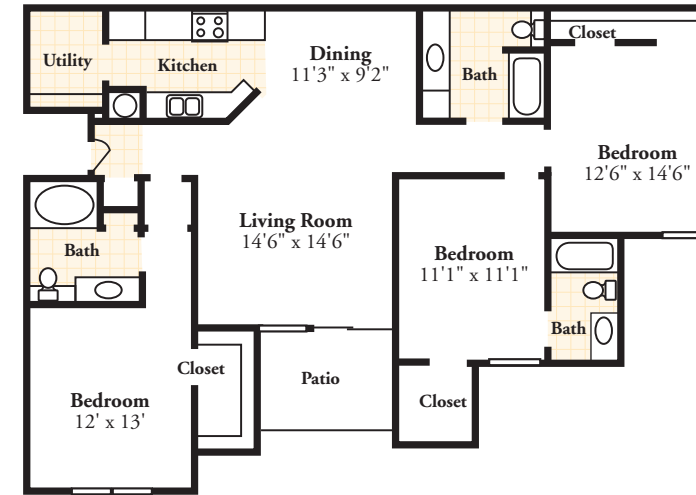
One Bedroom Diplomat
(879 sq.ft.) \$ _____



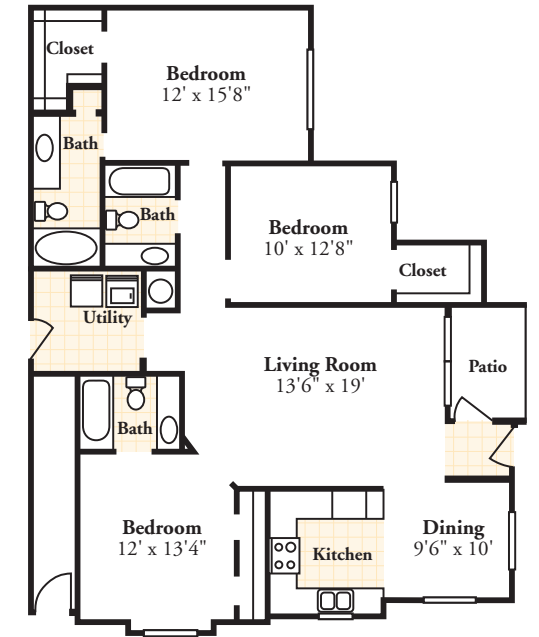
Two Bedroom Executive
(1213 sq.ft.) \$ _____



Two Bedroom Phoenix
(1247 sq.ft.) \$ _____



Three Bedroom Regency
(1416 sq.ft.) \$ _____



Three Bedroom Ambassador
(1385 sq.ft.) \$ _____

Security Deposit \$ _____ Application Fee \$ _____

Six Premier Floorplans

Our luxury homes feature the maximum amount of living space, bedrooms to fit king or queen beds, plenty of cabinet and closet areas, and generous windows for natural lighting.

Floorplan measurements are approximate.