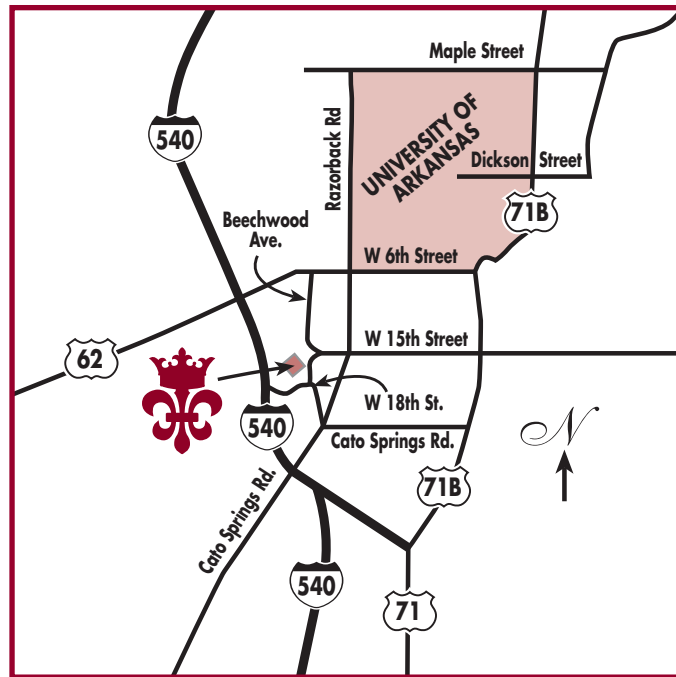




Premier Location



WE'RE CONVENIENTLY LOCATED ...

- ✿ University of Arkansas, Reynolds stadium, Baum stadium and Randall Tyson Track
- ✿ Convenient to Interstate I-540
- ✿ Close to fine dining and entertainment

Directions: From the campus: Proceed South 1/4 mile on Razorback Rd. Turn right at 15th Street (Baum Stadium) curve to the left and we are on the right.

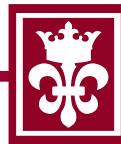
From 540 North: Take exit 62 go left on to 6th Street. Turn right on Razorback Rd. Turn right at 15th Street (Baum Stadium) curve to the left and we are on the right.



(479) 582-5826 ✿ TOLL FREE (800) 293-0054

1741 W. CROWNE DRIVE ✿ FAYETTEVILLE, AR 72701

FAX (479) 582-5825 ✿ E-MAIL: gohogs@crowneapartments.com



Welcome to Crowne at Razorback, the only name for elegant apartment living. We are conveniently located close to the intersection of Razorback Road and 15th Street just south of the University of Arkansas campus. With its top of the line interior design, custom features and large floorplans, Crowne at Razorback offers the luxury lifestyle you deserve.

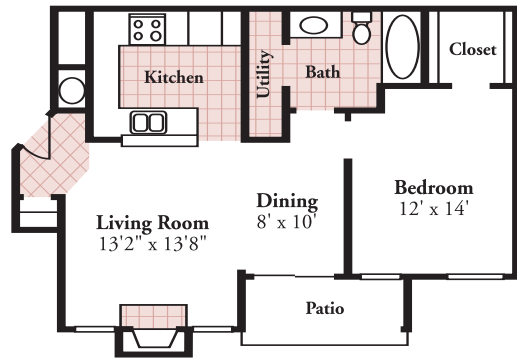
Premier Community

WE OFFER THE VERY FINEST COMMUNITY AMENITIES:

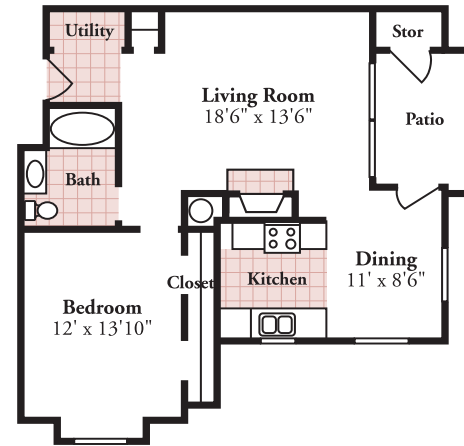
- ✿ Elegant residential clubhouse
- ✿ Resort style swimming pool and deck
- ✿ Immaculate landscaping
- ✿ Fitness oriented exercise facility
- ✿ 24 hour clothes care facility
- ✿ Attached and detached garages available

OUR ELEGANT INTERIORS ARE CUSTOM DESIGNED WITH PRIDE:

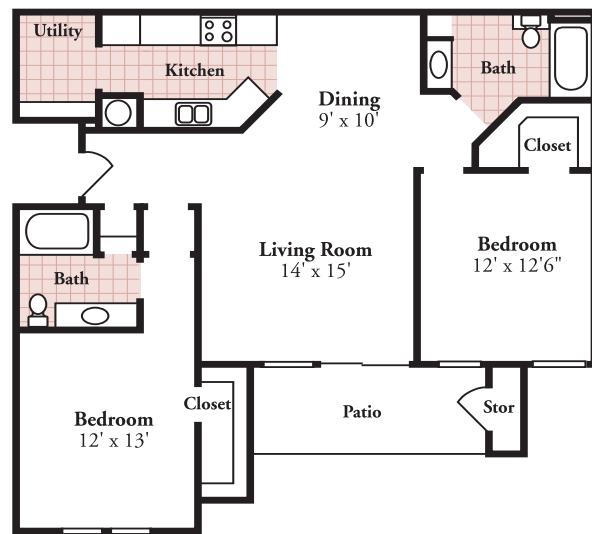
- ✿ Six extra spacious floorplans
- ✿ Large windows for natural lighting
- ✿ Fireplaces with custom mantels
- ✿ Patios or balconies w/storage
- ✿ Luxury oversized garden tubs
- ✿ Walk in closets w/wire shelving
- ✿ Vaulted or 9 ft. ceilings with fans
- ✿ Double crown molding & six panel doors
- ✿ Fire sprinkler protection
- ✿ Prewired for high speed communication
- ✿ Gourmet kitchens with large cabinets
- ✿ Washer/dryer connections



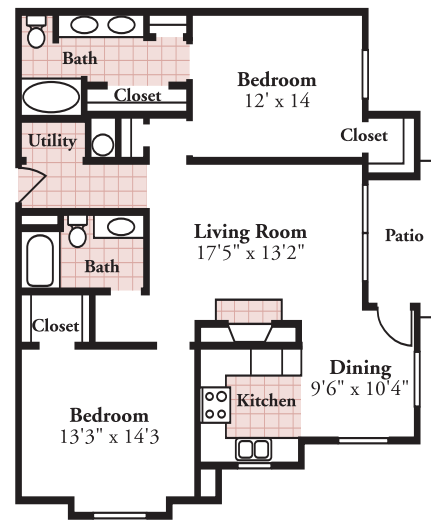
One Bedroom Deluxe
(845 sq.ft.) \$ _____



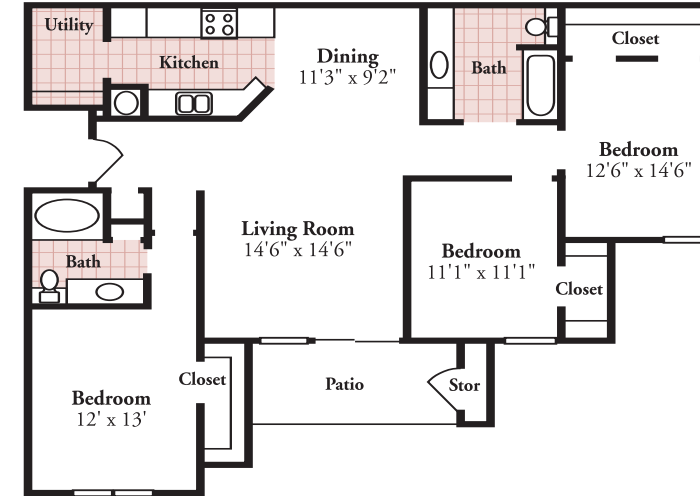
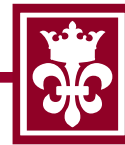
One Bedroom Diplomat
(879 sq.ft.) \$ _____



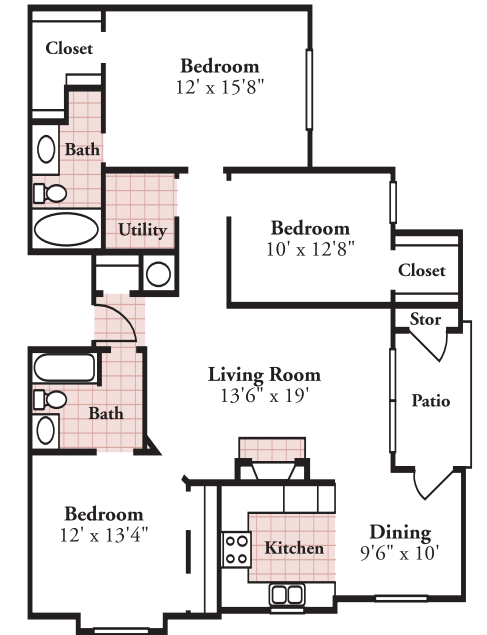
Two Bedroom Executive
(1213 sq.ft.) \$ _____



Two Bedroom Phoenix
(1247 sq.ft.) \$ _____



Three Bedroom Regency
(1416 sq.ft.) \$ _____



Three Bedroom Ambassador
(1385 sq.ft.) \$ _____

Security Deposit \$ _____ Application Fee \$ _____

Six Premier Floorplans

Our luxury homes feature the maximum amount of living space, bedrooms to fit king or queen beds, plenty of cabinet and closet areas, and generous windows for natural lighting.

Floorplan measurements are approximate.