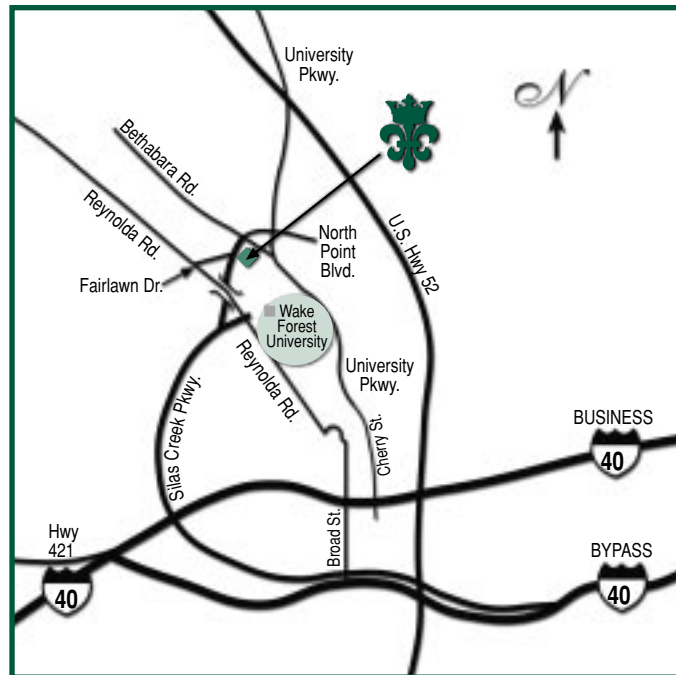




Premier Location



WE'RE LOCATED JUST OFF SILAS CREEK PARKWAY IN THE NORTH POINT AREA. WE OFFER A PEACEFUL AND SECLUDED LIVING EXPERIENCE, YET WE'RE JUST MINUTES FROM:

- ❁ Wake Forest University
- ❁ Madison Office Park
- ❁ LJVM Coliseum
- ❁ Major corporate headquarters
- ❁ Unique shopping/dining at Reynolda Village

Directions: from Business 40 West (Greensboro area): Take Silas Creek Parkway North exit. (This exit will curve onto Silas Creek) Travel approx. 3 miles and Silas Creek will fork; bear left. Travel approx. 1.5 miles. Make a right onto Bethabara Road. We are on the right.

CROWNE OAKS

(336) 759-9444 ❁ (800) 606-8793

1000 CROWNE OAKS CIRCLE ❁ WINSTON-SALEM, NC 27106

FAX (336) 759-7868 ❁ E-MAIL: Oaks@crowneapartments.com



North Point's finest luxury apartment community is intimately surrounded by a lush wooded area. When choosing your best place to call home, we're the natural choice ... the only choice!

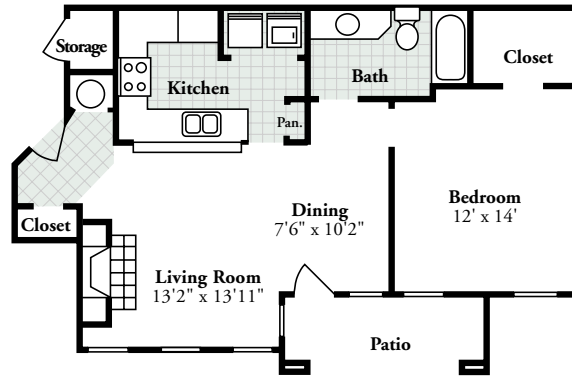
Premier Community

WE OFFER THE VERY FINEST COMMUNITY AMENITIES:

- ❁ Extensive landscaping
- ❁ Swimming pool and sauna
- ❁ Scenic walking path
- ❁ Personal garages available
- ❁ Distinctive & elegant residential clubhouse
- ❁ Fully-equipped fitness center
- ❁ Lighted tennis courts
- ❁ Controlled access entrance

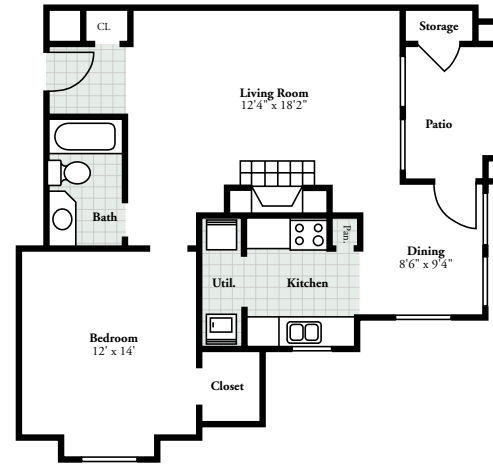
OUR ELEGANT INTERIORS ARE CUSTOM DESIGNED WITH PRIDE:

- ❁ Spacious 1, 2 & 3 bedroom homes
- ❁ Bay windows & great views
- ❁ Large refrigerators with icemakers
- ❁ Vaulted ceilings with fans
- ❁ Washer/dryer connections
- ❁ Nine-foot ceilings available
- ❁ Deluxe kitchens with European cabinets
- ❁ Wood burning fireplaces with mantles
- ❁ Elegant residential details
- ❁ Private patios/balconies with storage
- ❁ Pre-wiring for alarm systems available



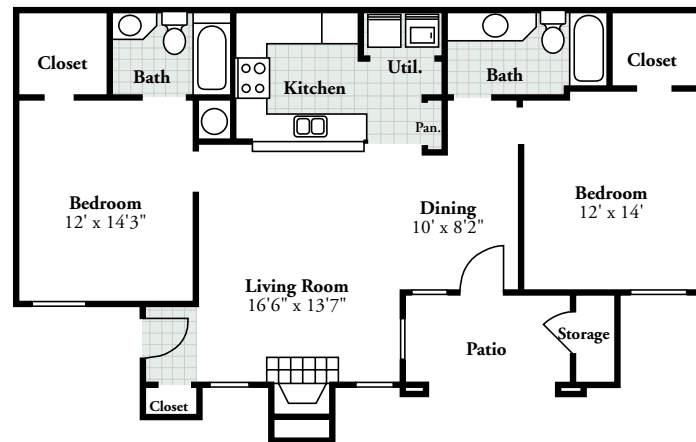
One Bedroom Deluxe

(850 sq.ft.) \$ _____



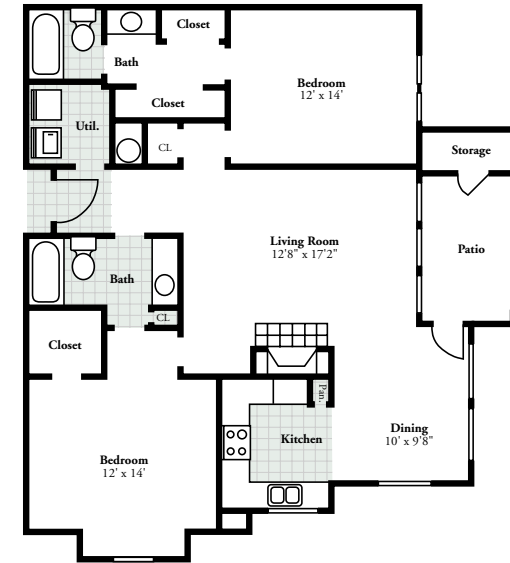
One Bedroom Diplomat

(900 sq.ft.) \$ _____



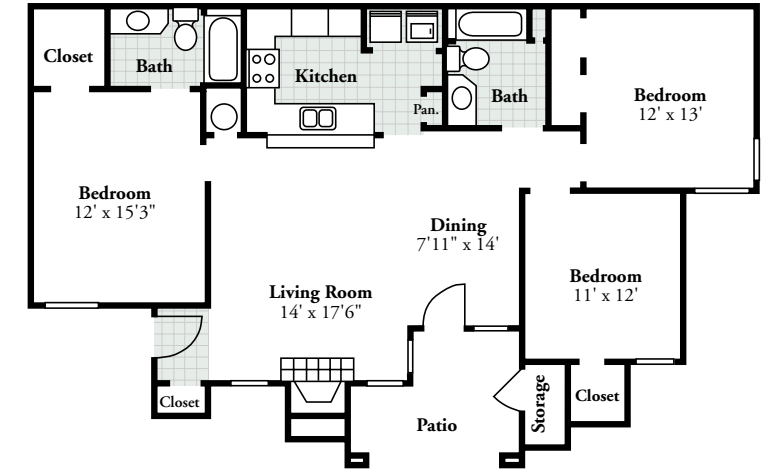
Two Bedroom Executive

(1200 sq.ft.) \$ _____



Two Bedroom Phoenix

(1275 sq.ft.) \$ _____



Three Bedroom Regency

(1400 sq.ft.) \$ _____

Security Deposit \$ _____

Application Fee \$ _____

Premier Floorplans

We take pride in offering five spacious floorplans. Our luxury homes include the maximum amount of living space, bedrooms to fit king or queen beds, plenty of cabinet and closet areas plus generous windows for natural lighting.

Floorplan measurements are approximate.