



Premier Location



WE ARE CONVENIENTLY LOCATED...

- ✿ Directly north of the University of Tennessee
- ✿ Just minutes from Downtown Knoxville
- ✿ Convenient to I-40, I-275 and Alcoa Hwy
- ✿ Close to fine dining and entertainment

Directions:

From Cumberland Avenue – turn North on 22nd St. (heading away from campus). Take left onto Grand Ave. The Crowne at Campus Pointe will be immediately on your left.



(865) 633-9422 ✿ TOLL FREE (866) 705-9422

2240 GRAND AVENUE ✿ KNOXVILLE, TN 37916

FAX (865) 521-5297 ✿ E-MAIL: campuspointe@bellsouth.net



Welcome to Crowne at Campus Pointe Apartments! We are, quite simply, the perfect place to call home. Crowne offers you top of the line interior details, custom features and immaculate landscaping. Crowne at Campus Pointe is conveniently located directly north of the University of Tennessee at the intersection of Grand Avenue and 22nd Street.

Premier Community

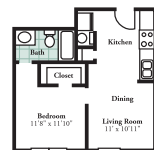
WE OFFER THE VERY FINEST COMMUNITY AMENITIES:

- ✿ Elegant clubhouse
- ✿ Coffee Parlor
- ✿ Fully equipped game room
- ✿ Computer/study center
- ✿ State of the art fitness center
- ✿ Swimming pool with deck
- ✿ Grill Area
- ✿ Off street parking

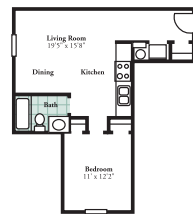
OUR ELEGANT INTERIORS ARE CUSTOM DESIGNED WITH PRIDE:

- ✿ Ten unique floorplans
- ✿ Full baths for virtually every bedroom
- ✿ 9 ft. or Vaulted Ceilings*
- ✿ Track lighting, ceiling fans & mini blinds
- ✿ Luxury garden tubs*
- ✿ Double crown molding*
- ✿ Large walk in closets
- ✿ Washer and dryers in every unit
- ✿ Well equipped kitchens
- ✿ Built in microwaves
- ✿ Gas log fireplace*
- ✿ Six Panel doors*

*In Select Units



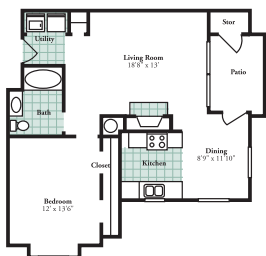
One Bedroom Flat
(421 sq.ft.) \$ _____



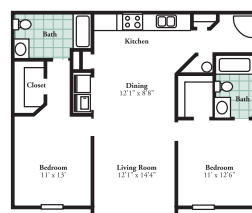
One Bedroom Traditional
(623 sq.ft.) \$ _____



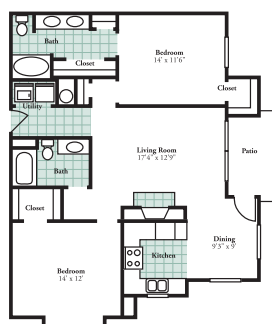
One Bedroom Coach House
(850 sq.ft.) \$ _____



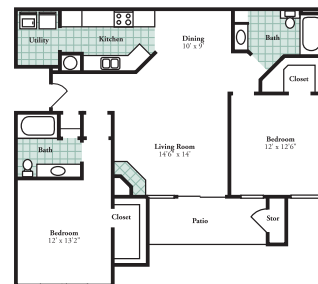
One Bedroom Diplomat
(814 sq.ft.) \$ _____



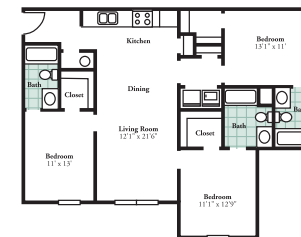
Two Bedroom Classic
(981 sq.ft.) \$ _____



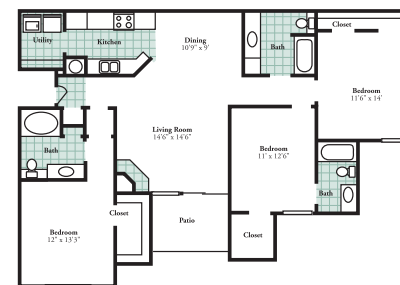
Two Bedroom Phoenix
(1182 sq.ft.) \$ _____



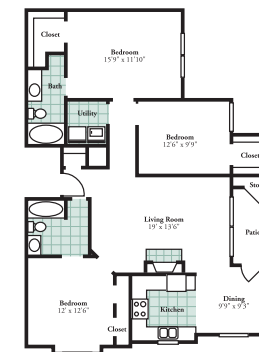
Two Bedroom Executive
(1148 sq.ft.) \$ _____



Three Bedroom Legacy
(1188 sq.ft.) \$ _____



Three Bedroom Regency
(1352 sq.ft.) \$ _____



Three Bedroom Ambassador
(1319 sq.ft.) \$ _____

Security Deposit \$ _____

Application Fee \$ _____

Ten Premier Floorplans

Our luxury apartments include the maximum amount of living space, plenty of cabinet and closet areas and washers and dryers in every unit.

Floorplan measurements are approximate.